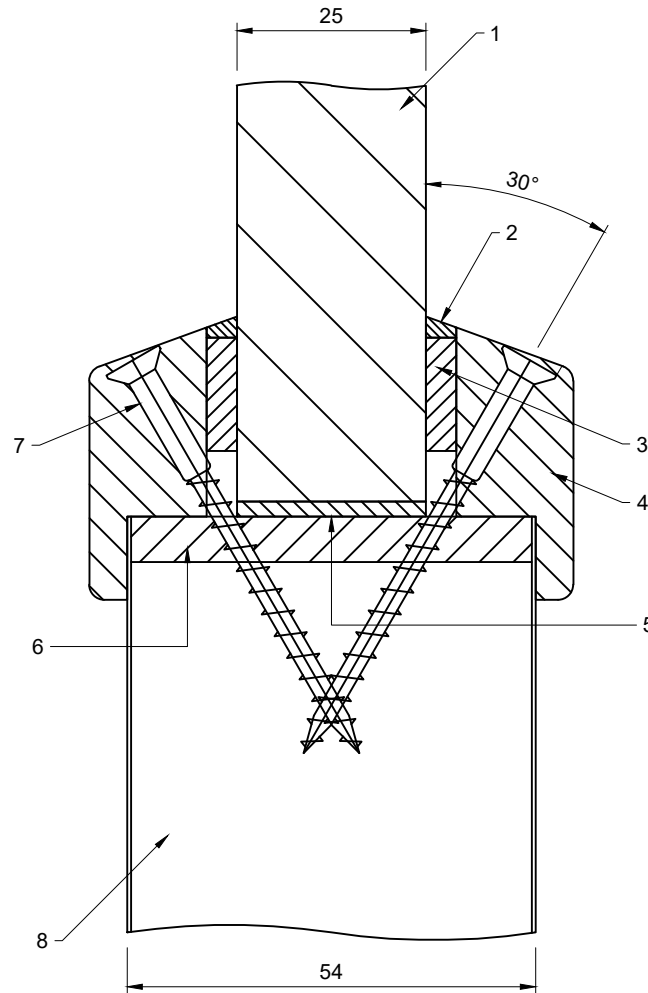
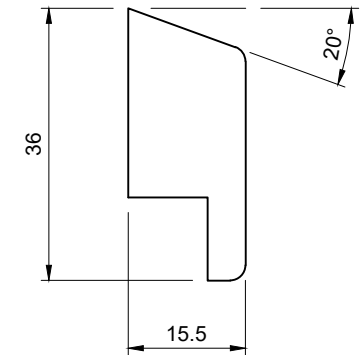


**Glazing Must Be To This Drawing - Do NOT Mix Glazing Systems Even If They Appear The Same**



Bead Profile - See DP15532 Rev01



Key:-

1. Pyrobel 25 Glass
2. Neutral Silicon Capping
3. 15mm Wide x 4mm Sealmaster Black Closed Cell Foam Tape
4. 30mm High x 15.5mm Wide (Including 5mm High x 5mm Wide Bolection With 20° Chamfer) Hardwood Glazing Bead, Minimum Density 640kg/m³. See DP15532
5. Hardwood Or Non-Combustible Setting Block
6. 6mm Hardwood Lining To Aperture - Concealed By Laminate Or Veneer, Minimum Density 640kg/m³
7. 60mm Long Steel Screws At A Maximum Of 150mm Centres, 30° To The Vertical & At A Nominal 50mm From Each Corner
8. Nominal 54mm Thick FD60 Door Leaf

Quality Standard Of Glazed Aperture To Work Instruction - WI\_21

Only Employees With A Signed Training Record For This Glazing System To Use This Glazing System

**Approved Glass - See CF377**

<u>Glass Type</u>	<u>Material Specification For Glass</u>	<u>Beading Drawing</u>	<u>Material Specification For Beading</u>	<u>Maximum Height (mm)</u>	<u>Maximum Width (mm)</u>	<u>Maximum Area (m²)</u>		
Pyrobel 25	MS_006	DP15532 Rev01	MS_007	1830 (At 710 Wide)	710 (At 1830 High)	1.29	Machined Aperture 17mm Larger Than Glass	Lined Aperture 5mm Larger Than Glass

Do Not Scale.

If In Doubt Ask!

**Description: Glazing System – Bolection Bead 25mm Pyrobel – FD60/06**



Unit 6, Ranskill Court,  
Sheffield,  
S9 5FZ.

Size: See Above

Tolerance: +/- 0.5mm

Fire Rating: FD60/60

Drawn By: P. Brash

Approved: Approved

Drawing No: DP15533

Revision: 04

Drawn Date: 07/12/2022

©Doorpac Limited

All Dimensions Are  
In mm Unless Stated.