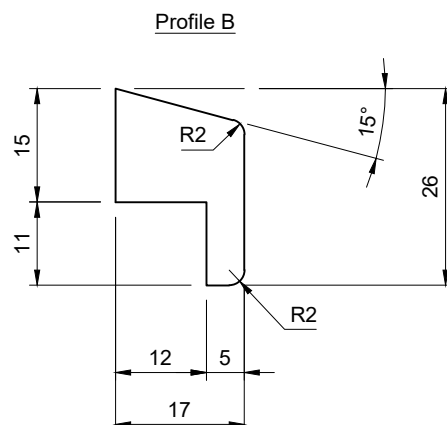
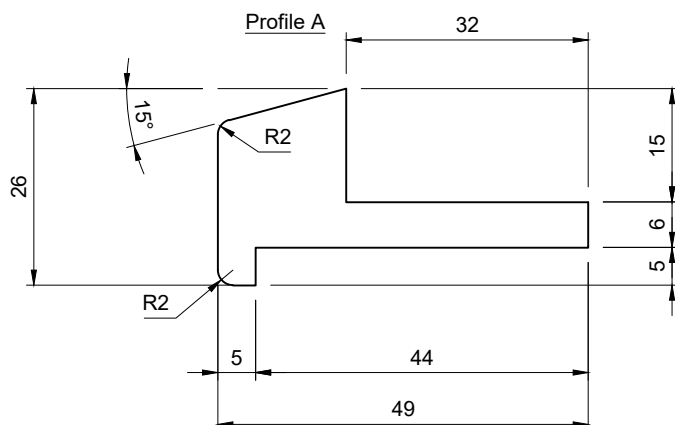
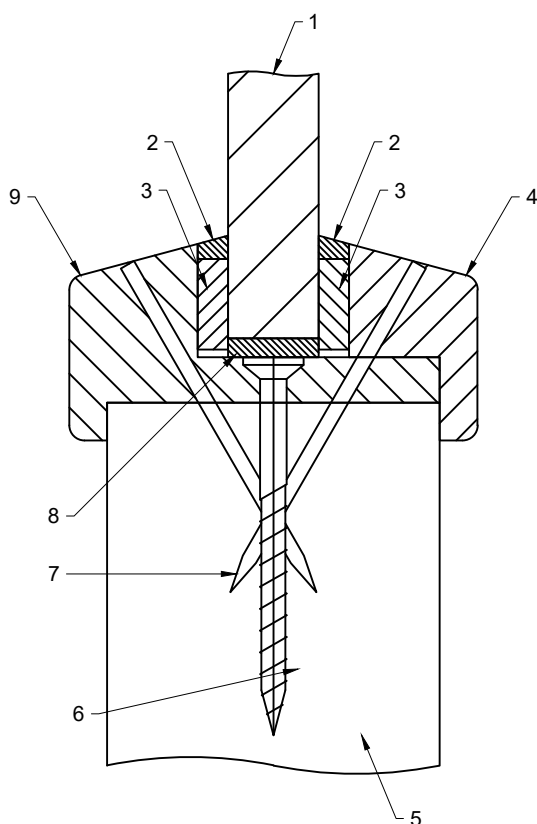


Glazing Bead Profiles



Do Not Scale.



Key:-

1. Pyrobelite 9EG
2. Neutral Silicone Capping
3. 12mm Wide x 5mm Thick Ceramic Fibre Based Tape Or Closed Cell Foam Tape (See Below For Approved Tapes)
4. 26mm High x 17mm W (Including 5 x 5mm Minimum Bolection With 15° Chamfer Or Square) Hardwood Glazing Bead (Profile B), Minimum Density 640kg/m³ To Internal Face
5. Nominal 44mm Thick FD30 Door Leaf
6. No 6-8 50mm Long Screw To The Centre Thickness Of The Door At 200mm Max Centres
7. 50mm Long Steel Pins At A Maximum Of 150mm Centres, 30° To The Vertical & A Nominal 50mm From Each Corner
8. Hardwood Or Non-Combustible Glazing Setting Block
9. 26mm High x 49mm W (Including 5 x 5mm Minimum Bolection With 15° Chamfer Or Square) Hardwood Security Glazing Bead Incorporating Integral Aperture Liner (Profile A), Minimum Density 640kg/m³ To External Face

Where Closed Cell Foam Tapes Are Included As An Acceptable Glazing Gasket, The Tapes Should Comprise One Of The Following Types:

- Arbostrip F42 by Arbo Façade Solutions
- FoamLINK 3003H+ by UK Industrial Tapes Ltd.
- FDP792 Superior F.R.G. Edge tape by Flowstrip Ltd.
- Scapa 3259 by Scapa Ltd
- Techniseal 220 by Technibond Ltd.
- Sealmaster Black Glazing Tape by Sealmaster * - *Doorpac Std*
- Fire + Acoustic Closed cell foam tape by Fire & Acoustice Seals Ltd.
- Flowstrip FDP005
- Expanded Polyethylene Foam by AS Rubber Ltd.
- Vita Cellular Foams Flexitec E
- Vita Cellular Foams Flexitec HT
- Illbruck TN131
- Avio product 606

Where Foam Tape Or Ceramic Fibre Is Specified As A Glazing Tape, Interdens Intumescent Strip Maybe Used As An Alternative.

If In Doubt Ask

Description: Glazing System Security Bead - Pyrobelite 9EG

© Doorpac Limited

Size: See Above

Drawing No: DP15959



Unit 6, Ranskill Court
Sheffield,
S9 5FZ.

Tolerance: +/- 0.5mm

Drawn By: P. Brash

Approved: Approved

Revision: 01

Drawn Date: 07/12/2022

Fire Rating: FD30S